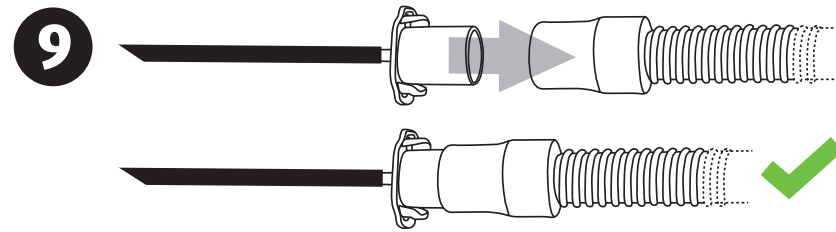
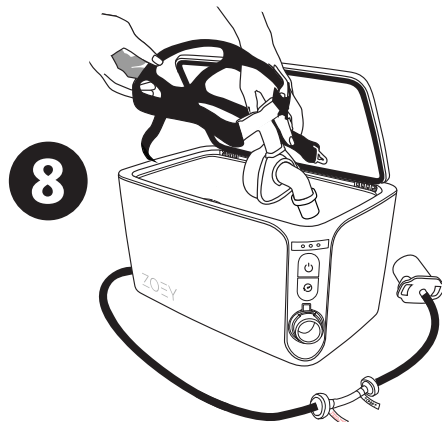
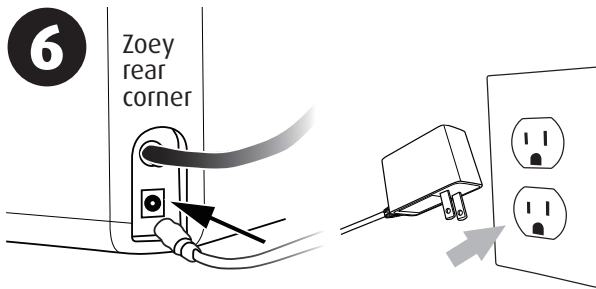
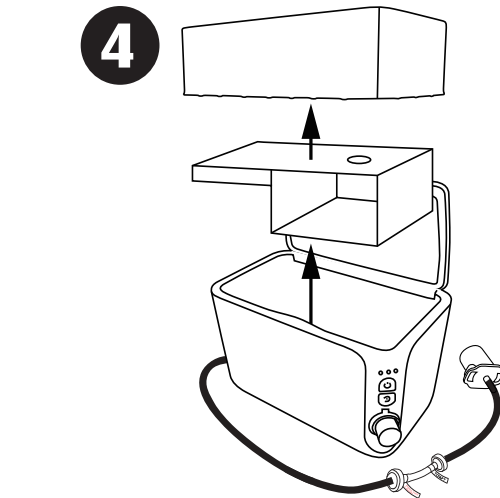
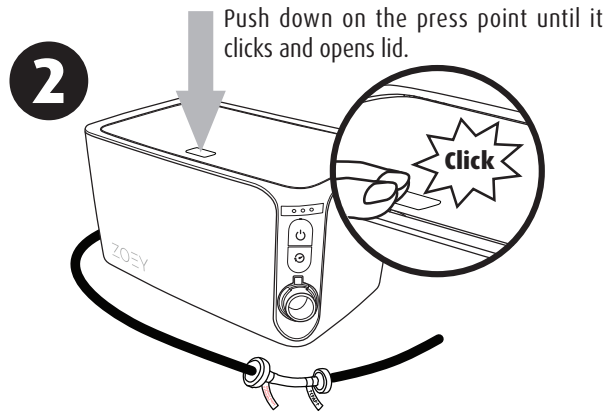
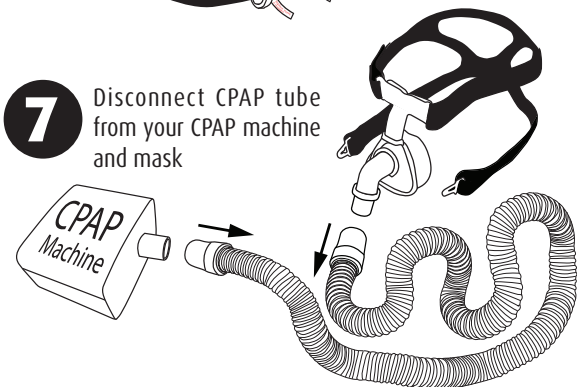
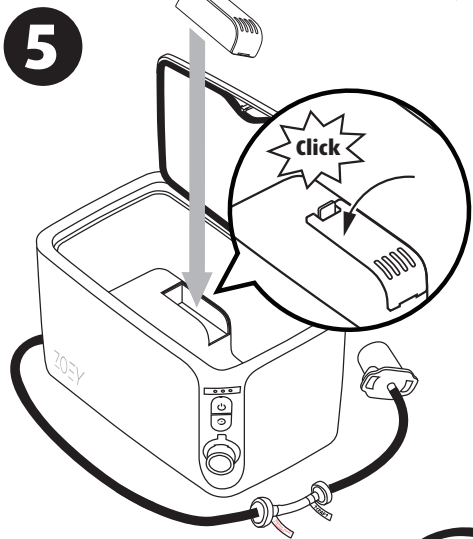
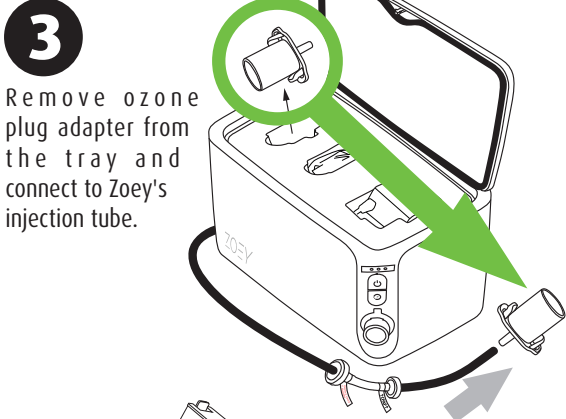


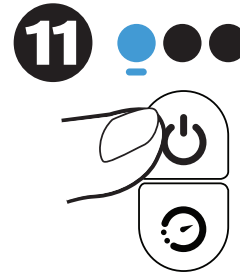
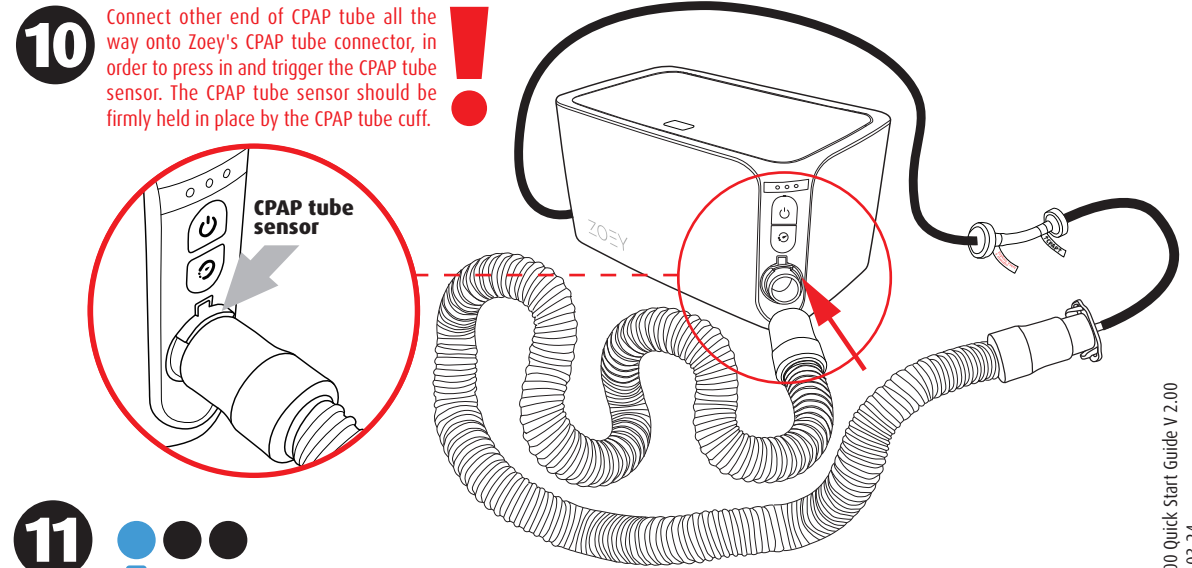
# ZOEY Quick Start Guide

**1** Before first time use, it is recommended to hand wash your CPAP equipment according to manufacturer's instructions, as you would normally without Zoey. This removes debris, and prevents oxidation odors from occurring in your CPAP equipment after running the Zoey cleaning cycle. When using Zoey regularly, you'll only need to hand wash your CPAP equipment as needed.



Connect ozone plug adapter to one end of your CPAP tube.

A standard CPAP tube is shown, but you may also use a heated CPAP tube. Visit [CleanWithZoey.com/tubes](http://CleanWithZoey.com/tubes) for guidance.



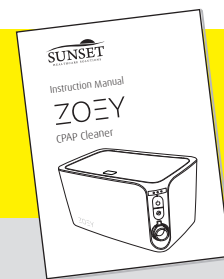
Press the power button on Zoey to start cleaning cycle. When the first light turns blue, you may walk away and let Zoey clean. It is important to keep Zoey closed during the entire cycle — normally 2 hours.

If three red lights are displayed, your CPAP tube may not be triggering Zoey's CPAP tube sensor (**see step 10**). Also, ensure Zoey's lid is fully clicked shut.



**Done!** When all three lights display solid green, the cycle is complete and it is safe to open Zoey. Remove CPAP tube while lid is open to turn off lights.

**?** Refer to the enclosed instruction manual for troubleshooting and more information



## Additional resources



CleanWithZoey.com  
/videos

How-to videos



CleanWithZoey.com

General information



Support@  
CleanWithZoey.com

Email us with your  
questions or feedback



Call  
1-888-990-4385

Call us if you'd like to  
talk to someone